



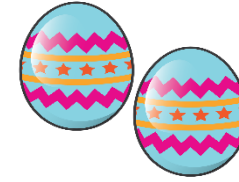
**E** is for  
**ELEPHANT**



Words that starts with **E,e**



elephant

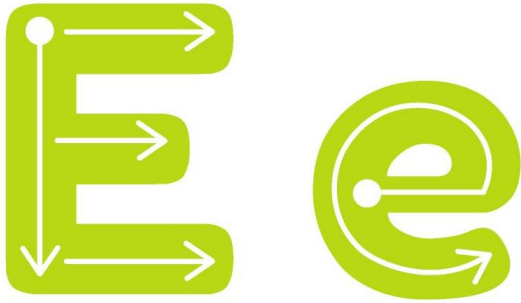


eggs



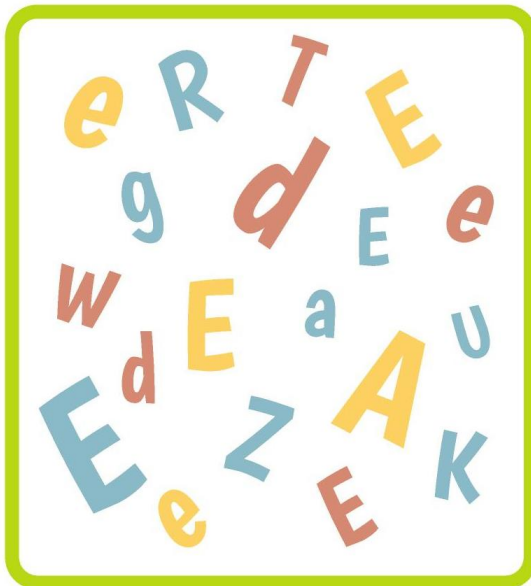
eight

How to trace



Let's trace it!

Circle the letter **E,e**



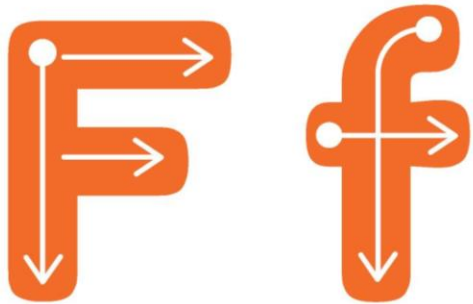
Tracing practice area with three rows of handwriting lines:

- Row 1: Dotted letters E, e, E, e, E, e for tracing.
- Row 2: A blue elephant illustration followed by dotted letters E, e, and the word elephant for tracing.
- Row 3: Dotted text "They are eggs." followed by two colorful Easter eggs.
- Row 4: Dotted text "Eight 8 Eight 8" followed by a blue sign with the number 8.



**F** is for  
**FOX**

How to trace



Circle the letter **F,f**



Words that starts with **F,f**



**f**rog



**f**oxes



**f**our

Let's trace it!

Tracing practice area with three rows of handwriting lines. The first row contains dotted letters 'F f F f F f' for tracing. The second row features a small green frog holding a 'TICKET' sign on the left, followed by dotted letters 'F f frog' for tracing. The third row contains the sentence 'They are foxes.' in dotted letters for tracing, with a group of three foxes on the right. The fourth row contains the word 'Four' and the number '4' in dotted letters for tracing, with a red circle containing '4€' on the right.